



Qimage – Epson – Color Profile Workflow

Color profiles are pieces of software that contain the color space, or dynamic range of a particular printer, ink, and paper combination. Printer color profiles are crucial to a color managed workflow that results in accurate and consistent color reproduction.

Download the Profile

Click on the link for your printer and Red River inkjet paper. You will be prompted to download a file. We recommend having it go to your desktop or other readily available location on the hard drive.

Open the ZIP file

We use a program to create universal ZIP files. They work with the native unzip software provided by Microsoft and Apple.

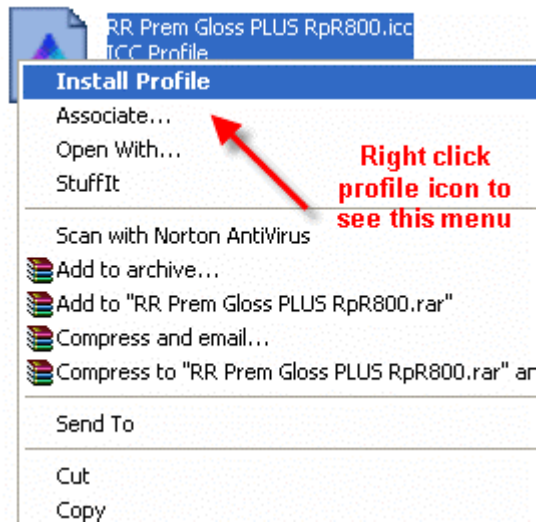
Install the Profile

The ICC files must be placed in the proper folder for your editing application to see and use them.

After the profile is unzipped, simply RIGHT CLICK on the file and choose install from the menu. You can also drag and drop into the profiles folder. See the chart below.



PC Profile Icon

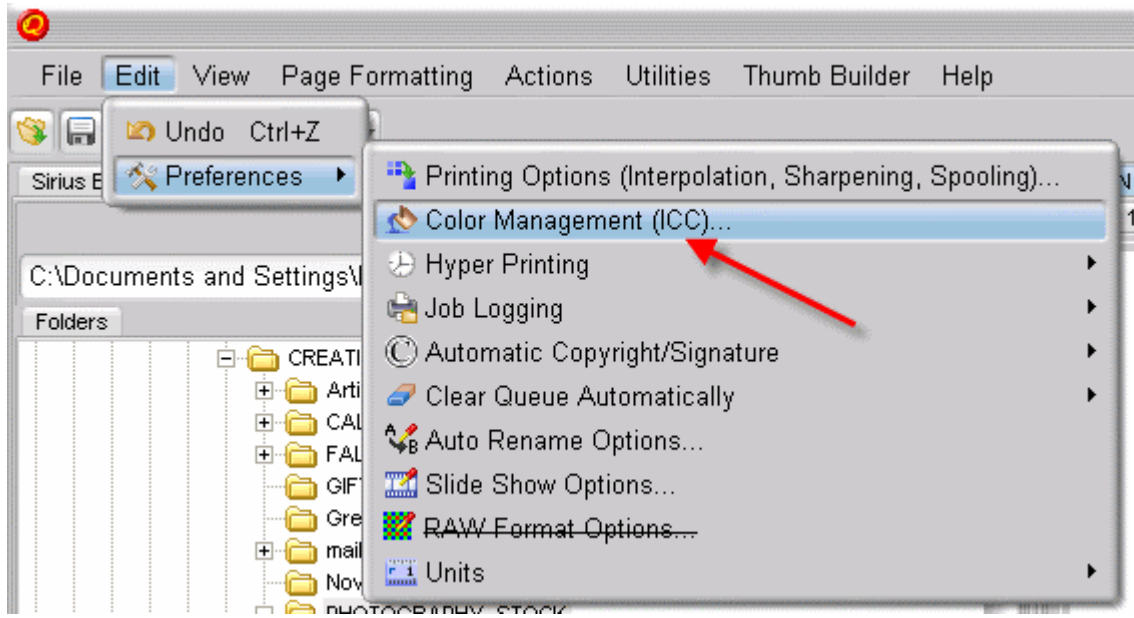


PC profile installation procedure

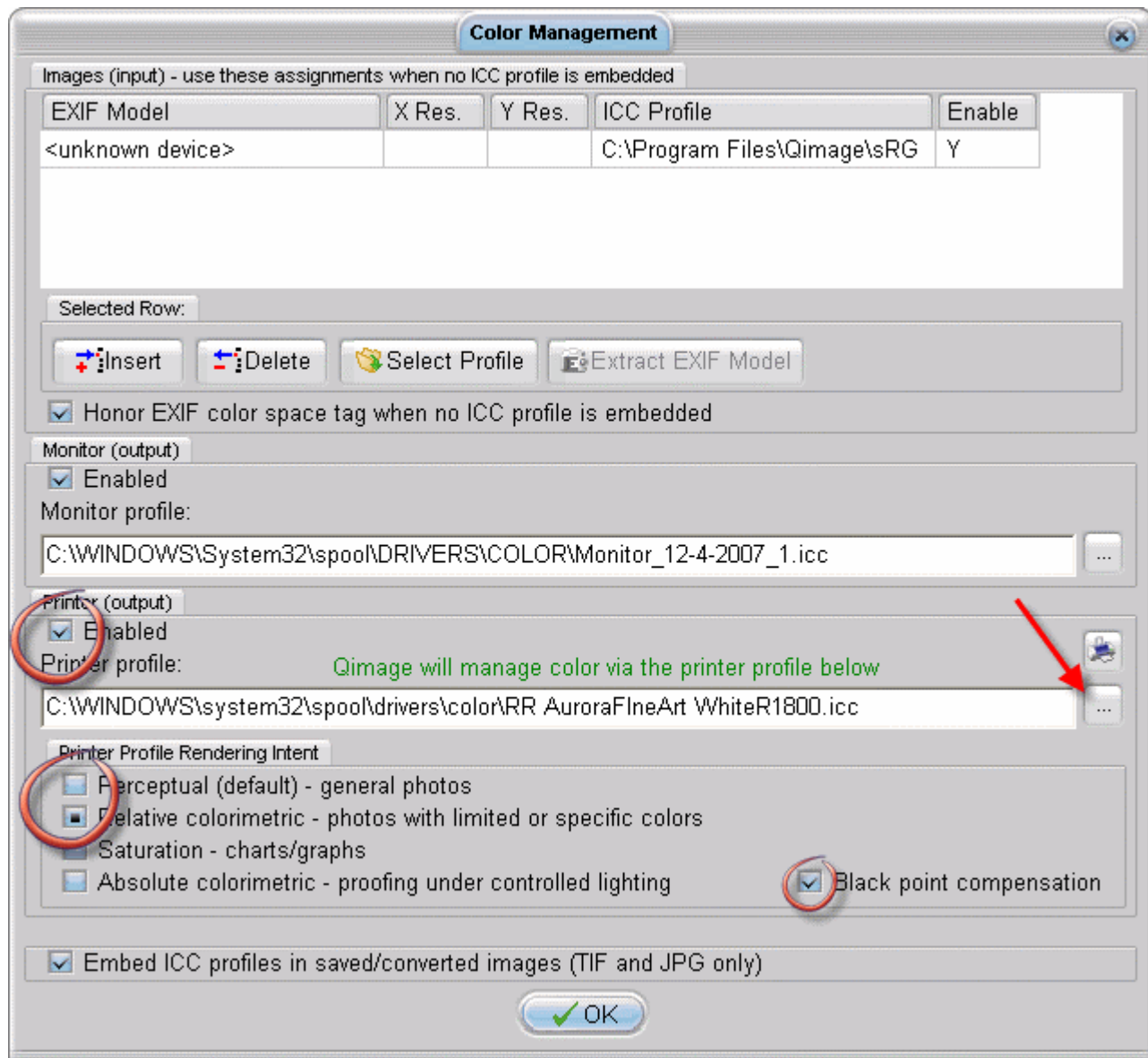
OS	ICC File Location
Win 98/ME	Windows/System/Color
Win NT/2000	Windows/System32/Spool/Drivers/Color
WinXP	Windows/System32/Spool/Drivers/Color
Vista	Windows/System32/Spool/Drivers/Color

Using Red River Paper profiles with your Epson printer continued....

From Qimage choose Edit > Preferences > Color Management (ICC).

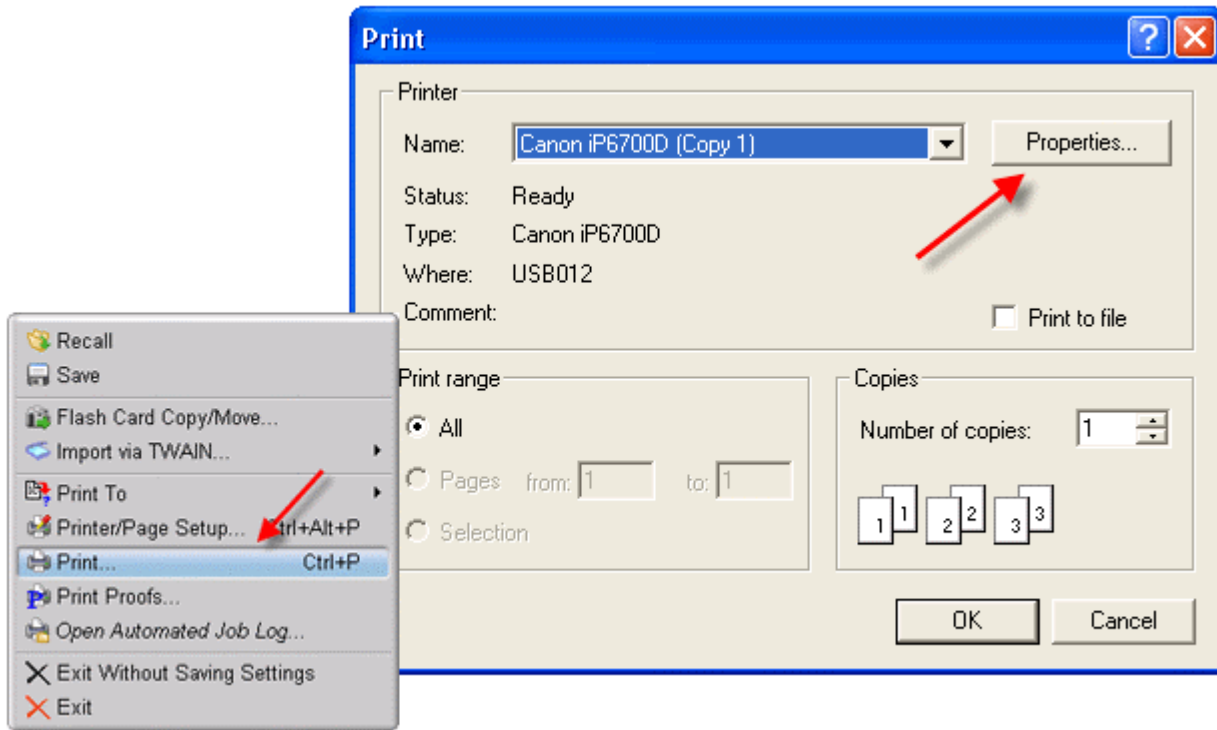


Continued on next page...

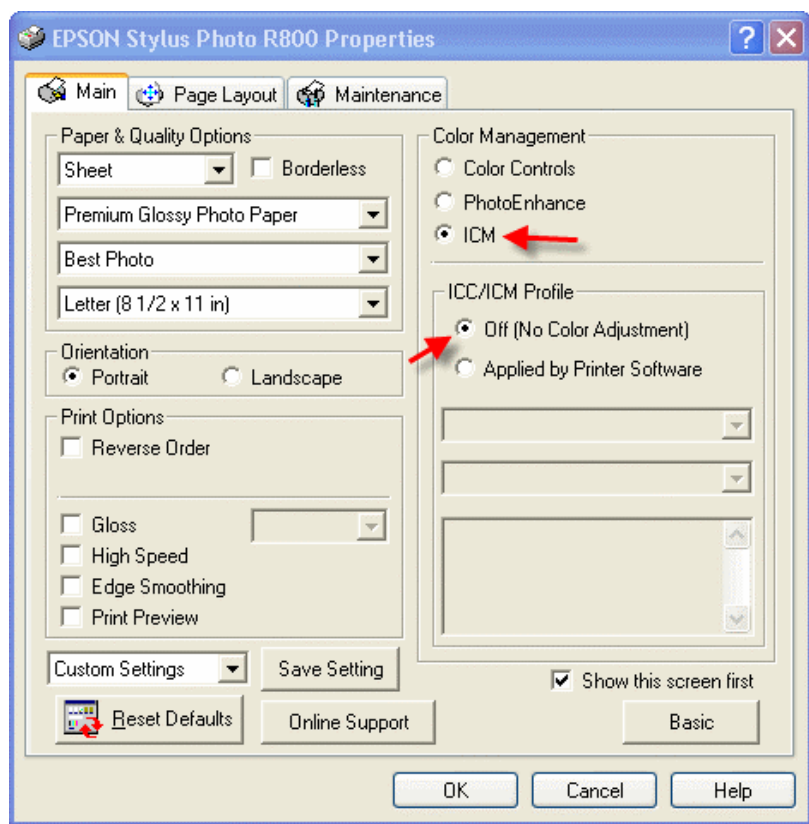


- 1) Enable printer output then use the finder to choose the printer profile
- 2) Choose rendering intent based on the profile's instructions
- 3) Black point compensation is usually on
- 4) Usually you will uncheck "Embed ICC profiles...." at the bottom on the page
- 5) Click OK

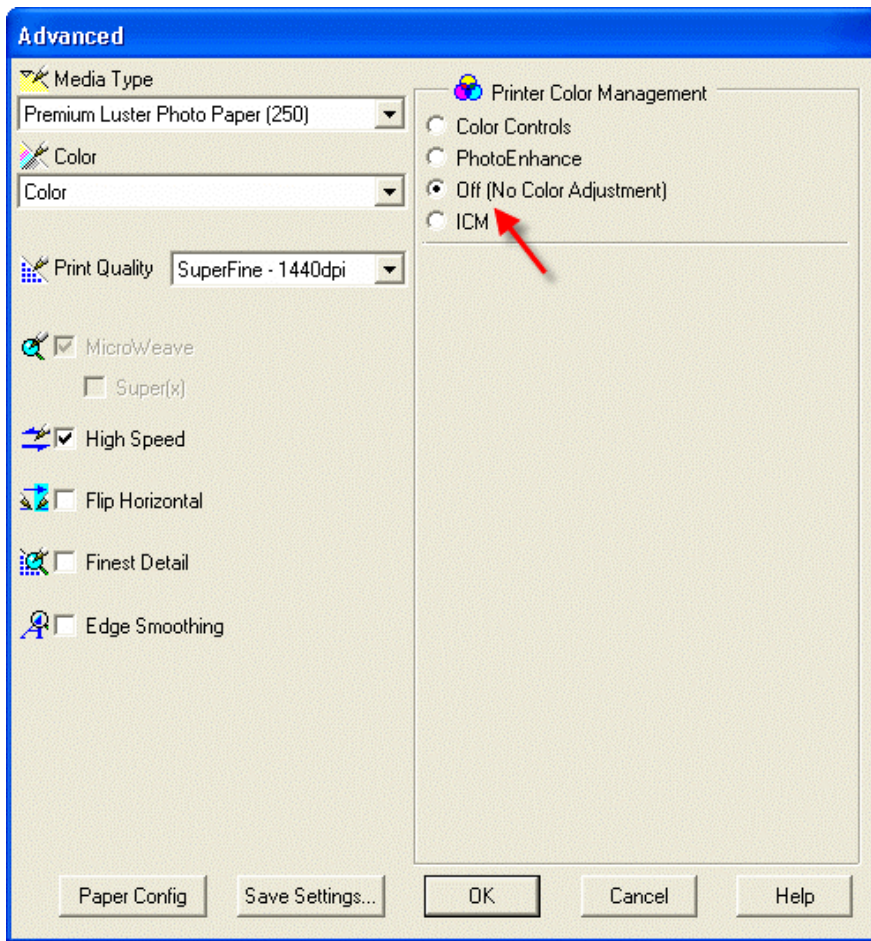
When you are ready to print, go to the File > Print. You are presented with a Print dialog box. Choose your printer then click on the Properties button to make necessary driver changes.



Depending on your printer, you will see one of these two dialogs. Here we are instructing Epson to shut down its color management features so Photoshop can take over.



OR



Using Red River Paper profiles with your Epson printer continued....

Now click OK until you are back at the Print dialog then OK.

The settings described above should be followed closely or you will have less than satisfactory results.

That completes the Epson / Qimage color profile usage guide.