



Color Profile Usage with Epson Printers

Updated 4/07

Color profiles are pieces of software that contain the color space, or dynamic range of a particular printer, ink, and paper combination. Printer color profiles are crucial to a color managed workflow that results in accurate and consistent color reproduction. Color profile use requires an "ICC aware" application like Photoshop, Qimage, Photoshop Elements, Corel Paint, and others.

NOTE! Due to the relatively technical nature of color management, Red River Paper cannot offer support for these profiles beyond the documents on our website and that come with the profile zip downloads.

Download the Profile

Click on the link for your printer and Red River inkjet paper. You will be prompted to download a file. We recommend having it go to your desktop or other readily available location on the hard drive.

Open the ZIP file

We use a program to create universal ZIP files. They work with the native unzip software provided by Microsoft and Apple.

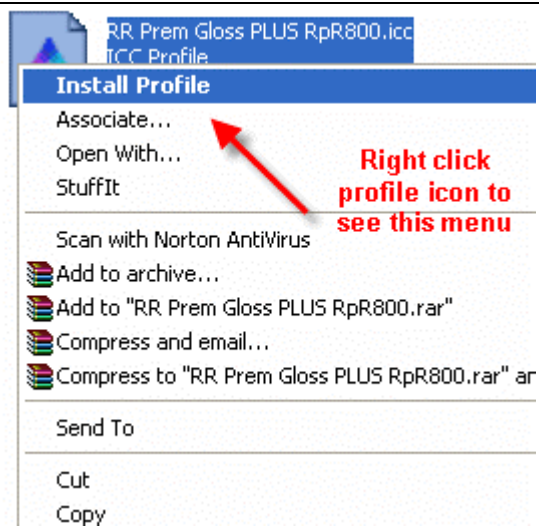
Install the Profile

The ICC files must be placed in the proper folder for your editing application to see and use them.

After the profile is unzipped, simply RIGHT CLICK on the file and choose install from the menu. You can also drag and drop into the profiles folder. See the chart below.



PC Profile Icon



PC profile installation procedure

OS

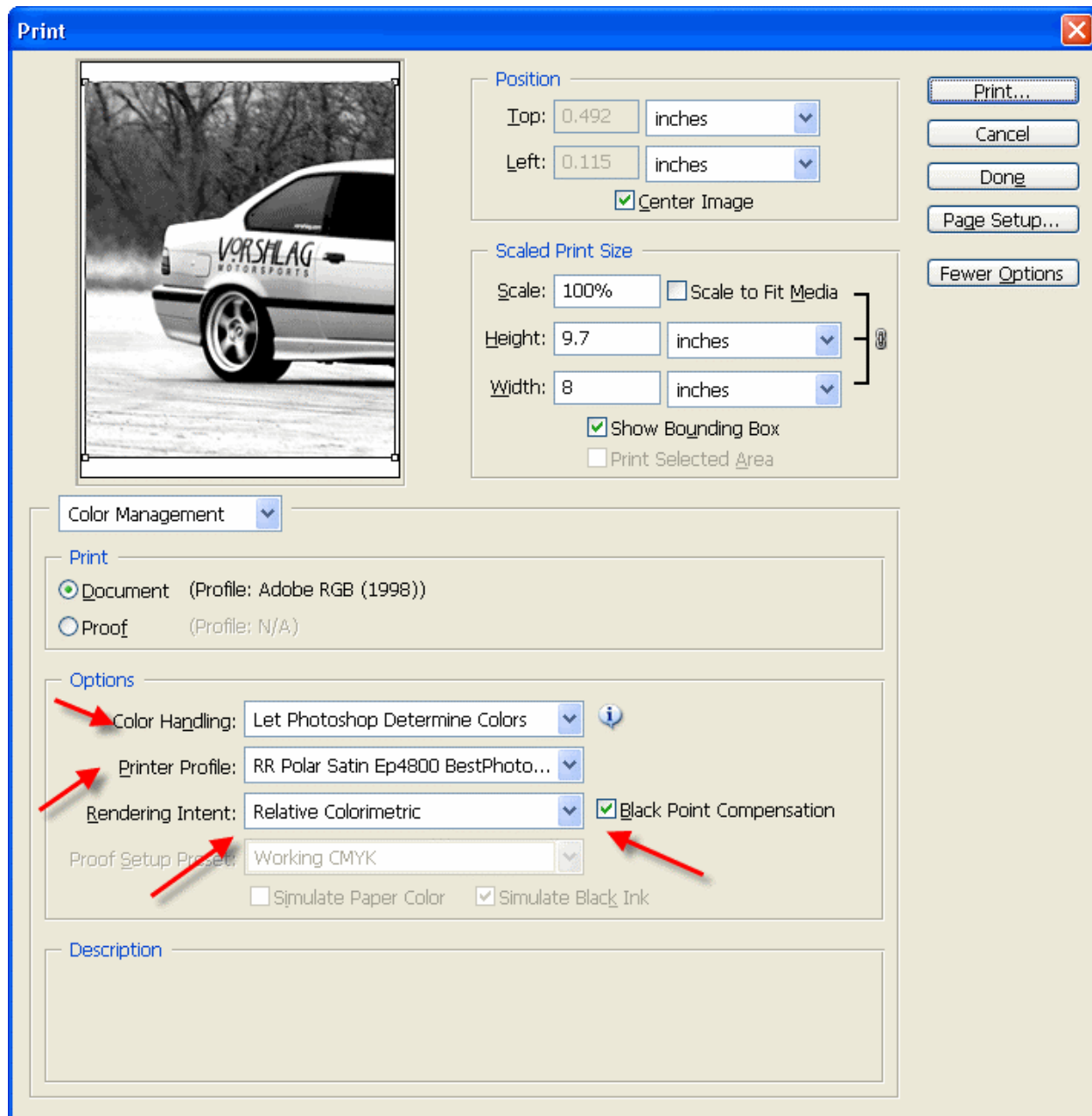
Win 98/ME
Win NT/2000
WinXP

ICC File Location

Windows/System/Color
Windows/System32/Spool/Drivers/Color
Windows/System32/Spool/Drivers/Color

Using Red River Paper profiles with your Epson printer

Examples use Photoshop CS2. Refer to your software manual or our color profile knowledgebase for information on other products.



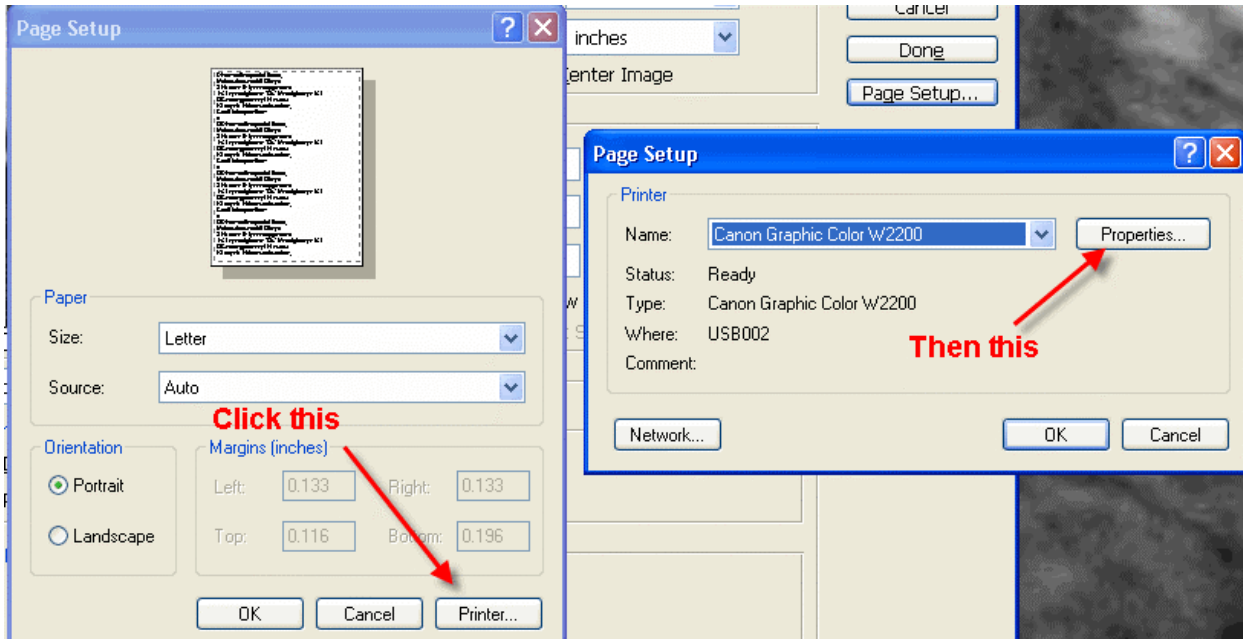
- 1) Let Photoshop determine colors
- 2) Choose your printer profile - Red River profiles all start with "RR"
- 3) Rendering intent can be Relative Colorimetric or Perceptual (experiment with these)
- 4) Check "Black Point Compensation"

When you are satisfied with the page layout and color management settings, click **Page Setup...** to proceed.

Note: You can just click the Print button, but as you will see below, there are advantages to using Page Setup.

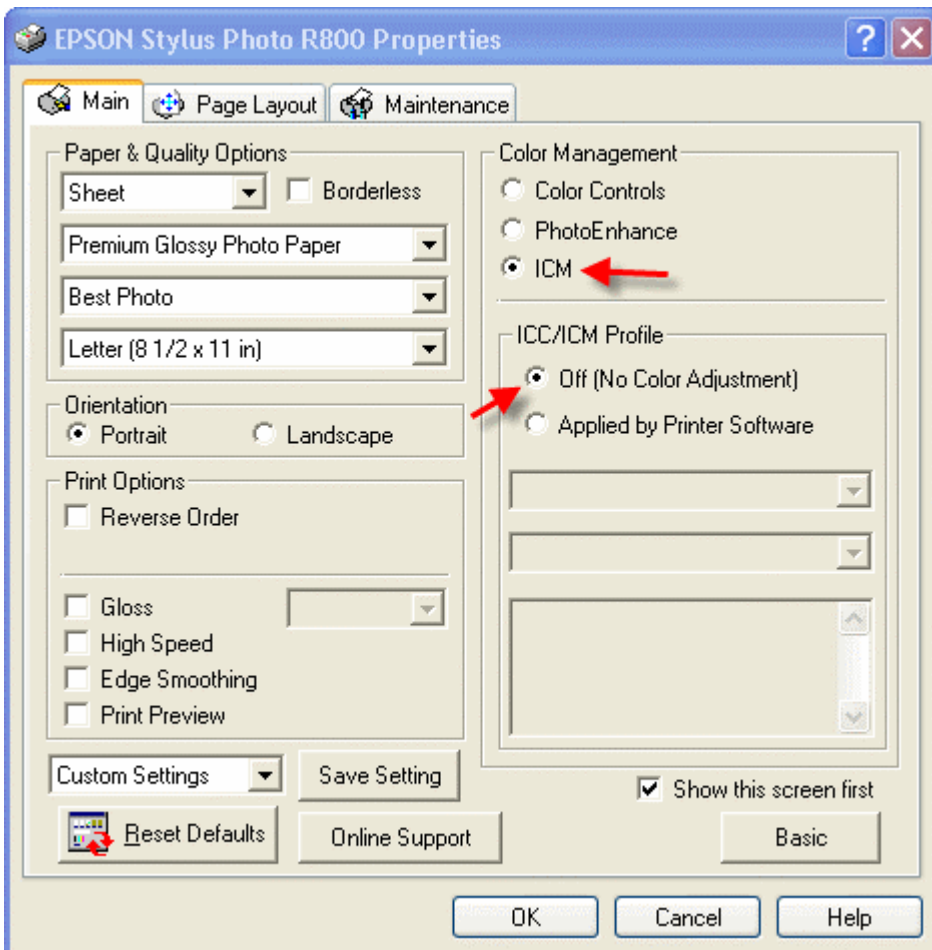
Using Red River Paper profiles with your Epson printer

When the Page Setup menu comes up click the Printer button....Then click on the properties button after you verify the right printer is chosen from the list of installed printers on your computer

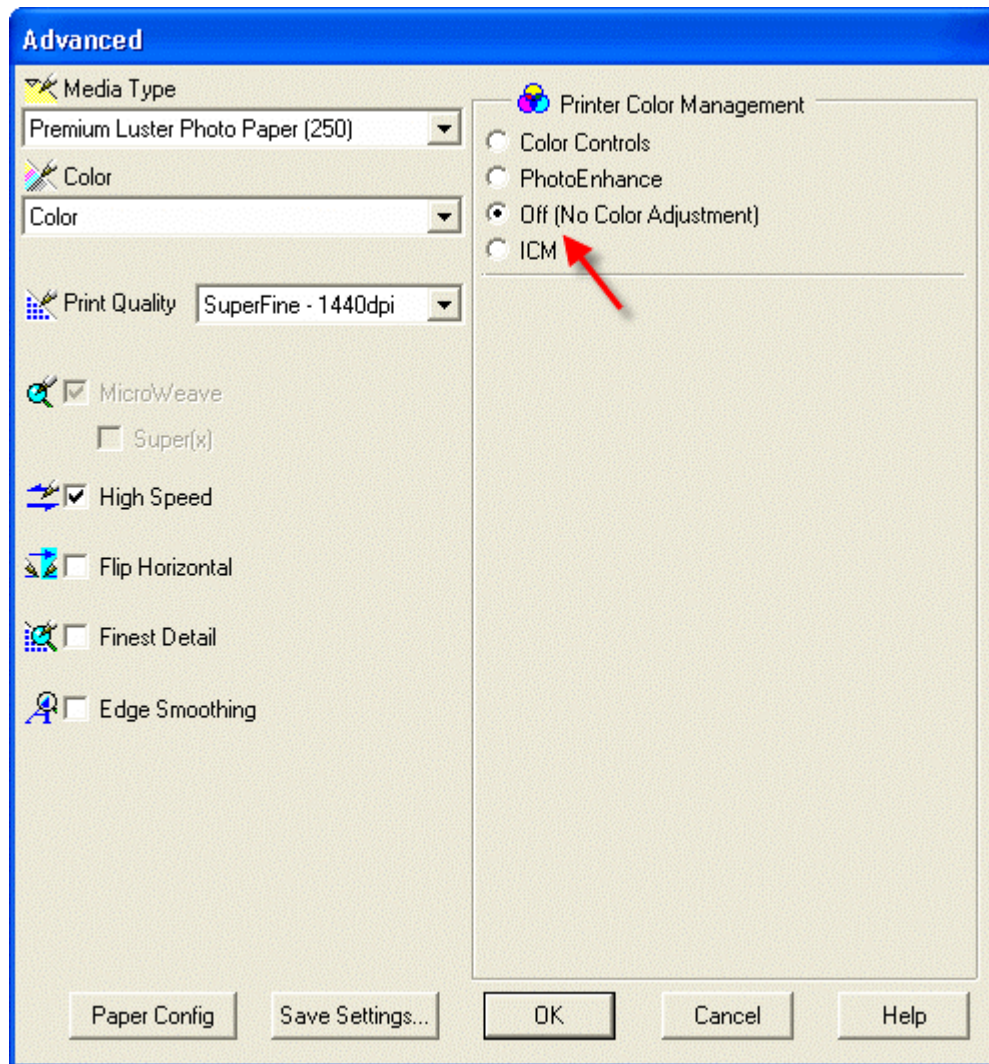


Epson Printer Properties

Depending on your printer, you will see one of these two dialogs. Here we are instructing Epson to shut down its color management features so Photoshop can take over.



Using Red River Paper profiles with your Epson printer



Now click OK until you are back at Photoshop's print with preview. We do this extra work to insure that Photoshop has not modified your color management choices (which it has a nasty habit of doing randomly).

The settings described above should be followed closely or you will have less than satisfactory results.

That completes the Epson / PC / Photoshop color profile usage guide.