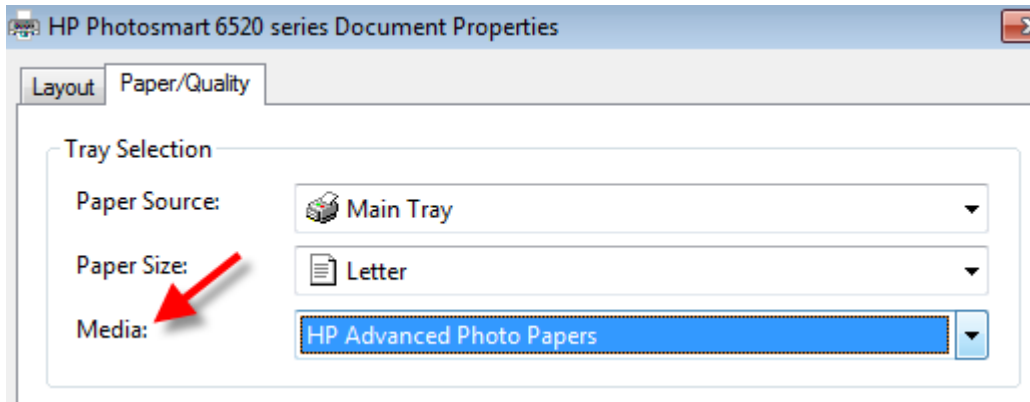


Color profiles are data files that contain a description of how a particular paper, ink, and printer create all colors, shades, and densities. Using a profile will result in more accurate and consistent output.

### Media Setting in Your Printer Driver / Properties



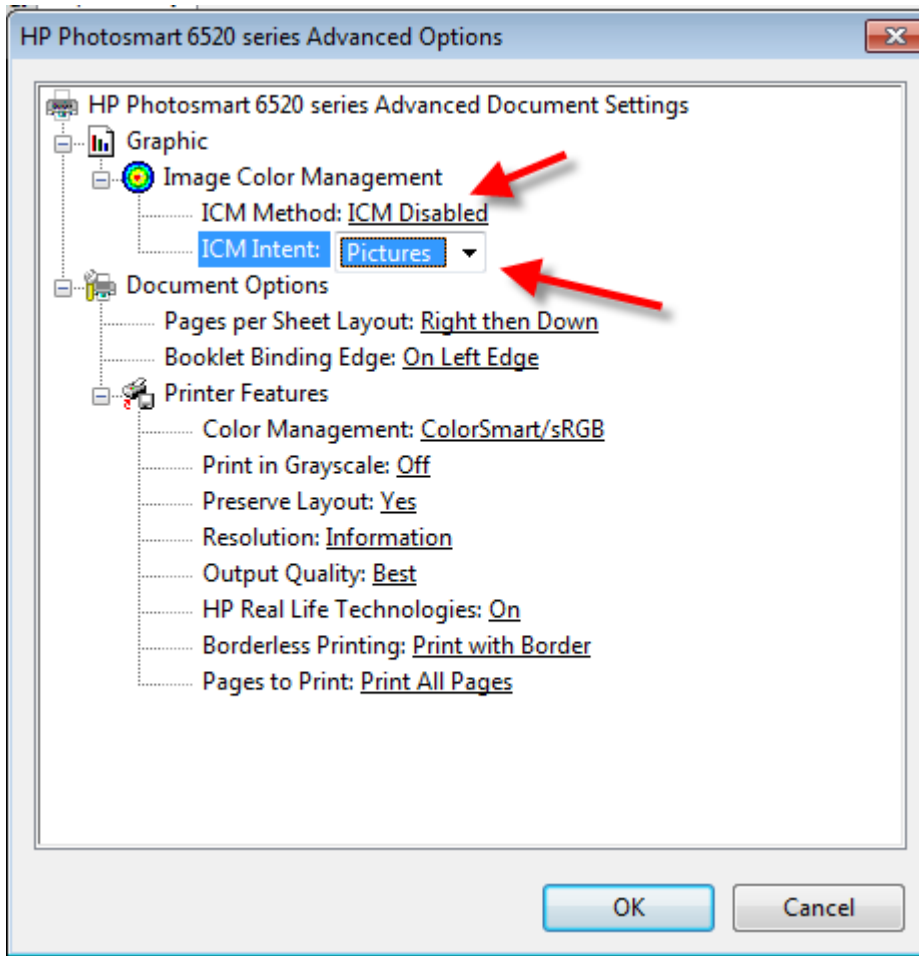
Set the Media according to the chart below. You will NOT see a Red River Paper name listed in the Media drop down menu.

Paper	Media Setting
<b>UltraPro Gloss</b>	HP Premium Photo Papers
<b>Arctic Polar Gloss</b>	Photo Paper Plus Glossy II
<b>Pecos River Gloss</b>	HP Premium Photo Papers
<b>UltraPro Satin 3.0</b>	HP Premium Photo Papers
<b>Arctic Polar Satin</b>	HP Premium Photo Papers
<b>Polar Pearl Metallic</b>	HP Premium Photo Papers
<b>Premium Matte Papers</b>	HP Premium Presentation Paper, Matte
<b>60lb. Polar Matte</b>	HP Premium Presentation Paper, Matte
<b>River Linen</b>	HP Premium Presentation Paper, Matte
<b>Paper Canvas</b>	HP Premium Presentation Paper, Matte

We do not recommend using matte or fine art papers heavier than 60lb. in HP printers.

## Turn off the printer's color management.

Go to the Advanced menu then set the Image Color Management according to the below. Mac users should have their printer color controls turned off automatically.



**How to Install Profiles** – [www.redriverpaper.com/installprofiles](http://www.redriverpaper.com/installprofiles)

**How to Use Printer Profiles** – [www.redriverpaper.com/useprofiles](http://www.redriverpaper.com/useprofiles)

## Be Someone's Inkjet Hero

Your prints are sure to wow friends, family, and colleagues. Of course, you can't share all your secrets when they ask why your prints look so great. But you can be their Inkjet Hero and introduce them to Red River Paper. We will happily answer their questions about papers, picking the right printer, and printing with no obligation.



Thank you for your referrals - they make all the difference!

## Contact Red River Paper

[customerservice@redriverpaper.com](mailto:customerservice@redriverpaper.com)

888-248-8774