

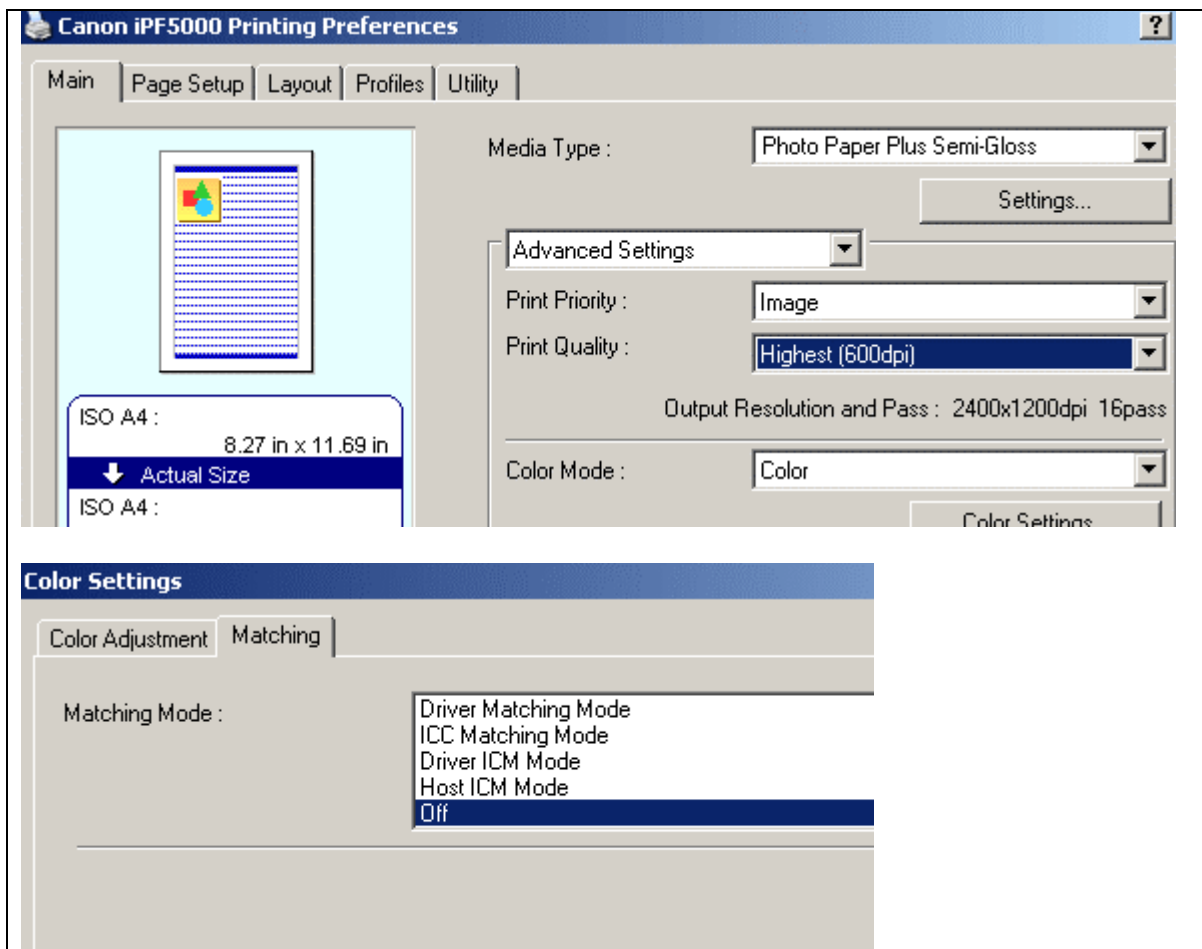
Profile Usage Instructions
Polar Satin
Canon iPF5000

For information on how to use color profiles, read Red River's "Color Profile Usage" and Epson's "How to use ICC profiles". These are available for download at www.redriverpaper.com/profiles

When you install the profile, it will show up in Photoshop's profile menu as:
RR PolarSatin iPF5000 BstQ

Below are the required printer driver settings for this profile. You must make sure all of the settings are correct to achieve optimum print quality.

Parameter	Required Setting
Paper Setting	Photo Paper Plus SemiGloss
Quality	Highest (600dpi)
Color Management	Under "Color Settings" menu, click on "Matching" tab - set Matching Mode to "OFF"



Refer to www.redriverpaper.com/profiles for any updates. Technical support for color profiles is limited to the documents included in the profiles section of www.redriverpaper.com