



Photoshop CS3 – Canon – Windows XP 2000 98

Color profiles are pieces of software that contain the color space, or dynamic range of a particular printer, ink, and paper combination. Printer color profiles are crucial to a color-managed workflow that results in accurate and consistent color reproduction.

Download the Profile

Click on the link for your printer and Red River inkjet paper. You will be prompted to download a file. We recommend having it go to your desktop or other readily available location on the hard drive.

Open the ZIP file

We use a program to create universal ZIP files. They work with the native unzip software provided by Microsoft and Apple.

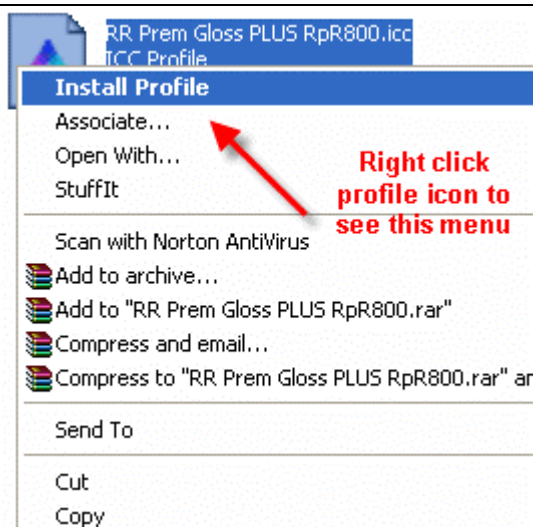
Install the Profile

The ICC files must be placed in the proper folder for your editing application to see and use them.

After the profile is unzipped, simply RIGHT CLICK on the file and choose install from the menu. You can also drag and drop into the profiles folder. See the chart below.



PC Profile Icon

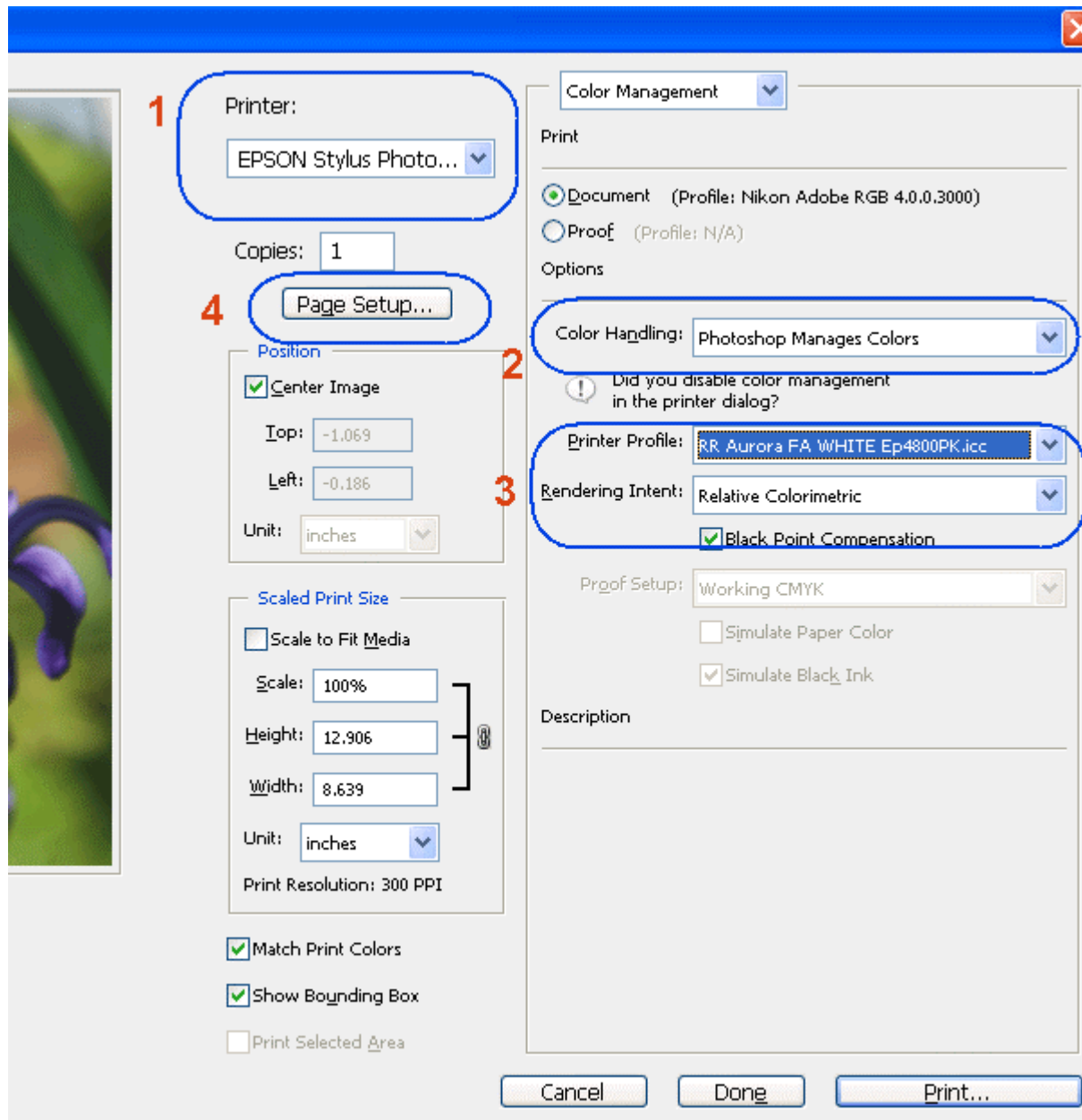


PC profile installation procedure

OS	ICC File Location
Win 98/ME	Windows/System/Color
Win NT/2000	Windows/System32/Spool/Drivers/Color
WinXP	Windows/System32/Spool/Drivers/Color

Using Red River Paper profiles with your Canon printer continued....

From Photoshop CS3 choose File > Print or hit Ctrl + P on your keyboard and this dialog appears.



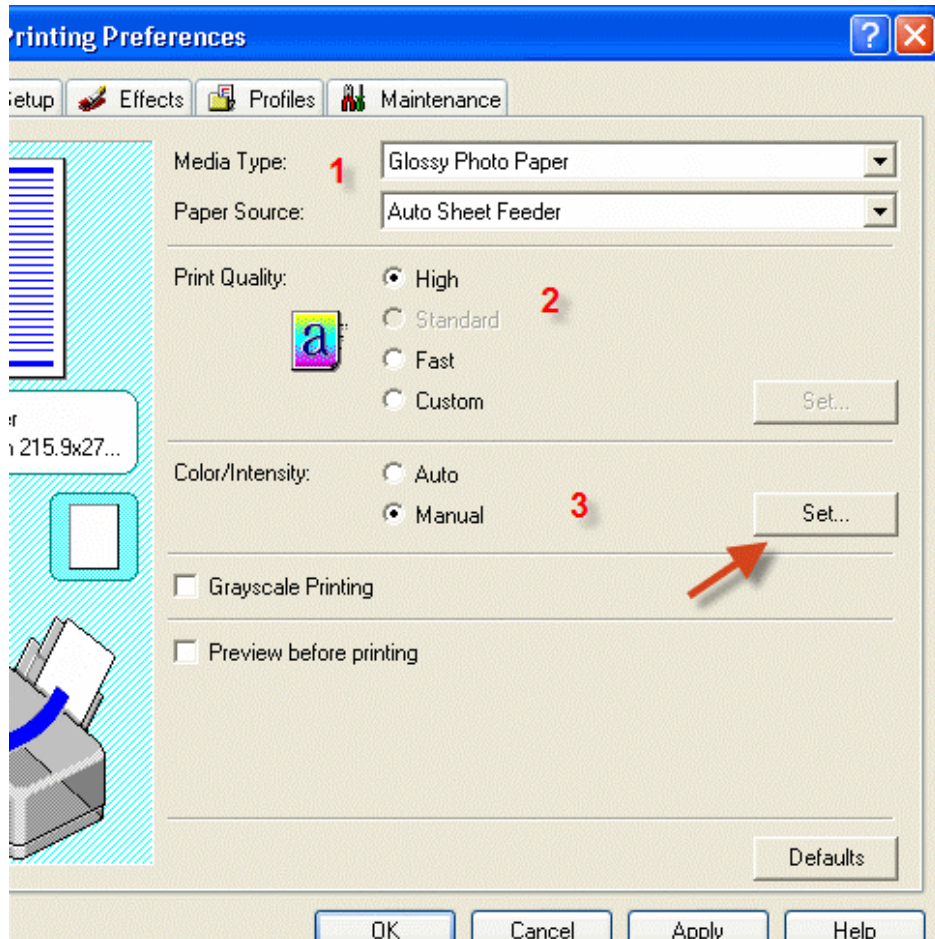
- 1) Select your printer
- 2) Select "Photoshop Manages Colors"
- 3) Select the printer profile for your paper, rendering intent per profile instructions, and black point compensation checked.
- 4) Click PAGE SETUP

Note: You can just click the Print button, but as you will see below, there are advantages to using Page Setup.

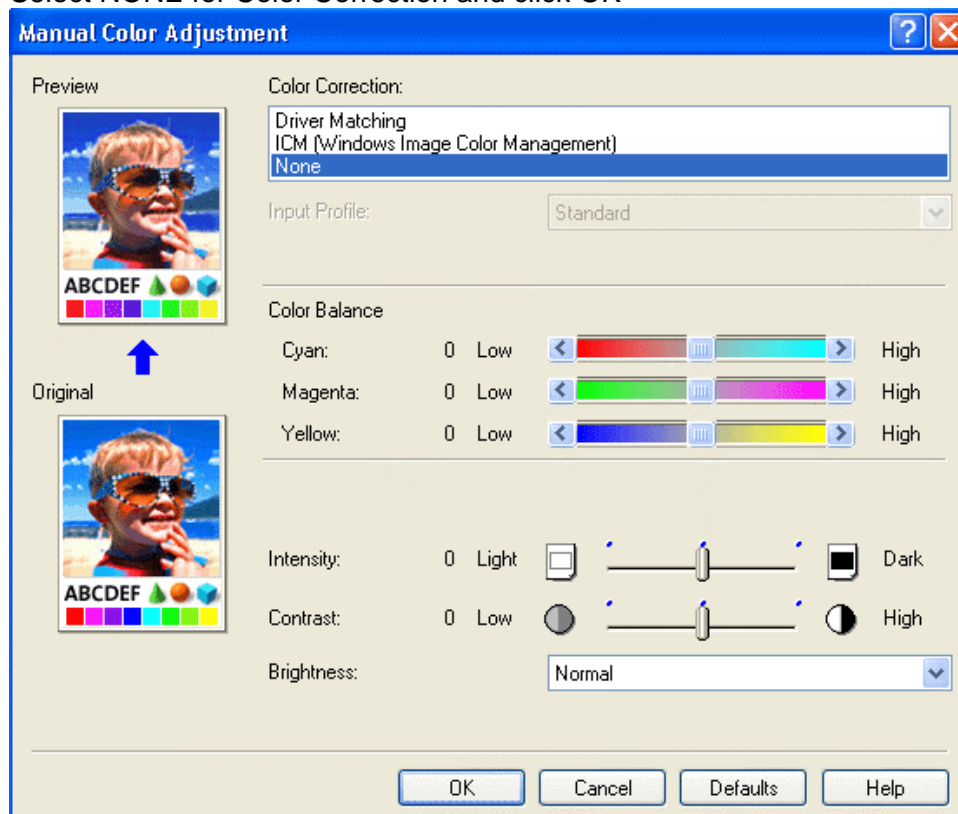
The below printer property dialogs appear after clicking PAGE SETUP.

Using Red River Paper profiles with your Canon printer

Set media type according to the profile instructions, set print quality to high. Choose MANUAL under Color/Intensity and click SET



Select NONE for Color Correction and click OK



Using Red River Paper profiles with your Canon printer continued....

Now click OK and you are back at Photoshop's print with preview. We do this extra work to insure that Photoshop has not modified your color management choices (which it has a habit of doing randomly).

The settings described above should be followed closely or you will have less than satisfactory results.

That completes the Canon / PC / Photoshop CS3 color profile usage guide.