



## Photoshop ELEMENTS 4 / 5 – Epson – Windows XP 2000 98

Color profiles are pieces of software that contain the color space, or dynamic range of a particular printer, ink, and paper combination. Printer color profiles are crucial to a color-managed workflow that results in accurate and consistent color reproduction.

### Download the Profile

Click on the link for your printer and Red River inkjet paper. You will be prompted to download a file. We recommend having it go to your desktop or other readily available location on the hard drive.

### Open the ZIP file

We use a program to create universal ZIP files. They work with the native unzip software provided by Microsoft and Apple.

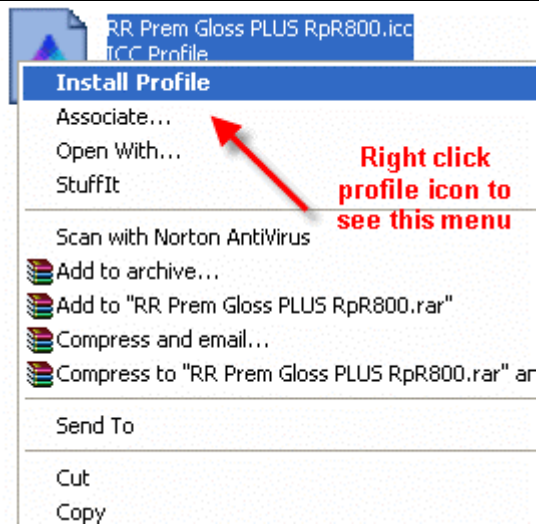
### Install the Profile

The ICC files must be placed in the proper folder for your editing application to see and use them.

After the profile is unzipped, simply RIGHT CLICK on the file and choose install from the menu. You can also drag and drop into the profiles folder. See the chart below.



PC Profile Icon



PC profile installation procedure

### OS

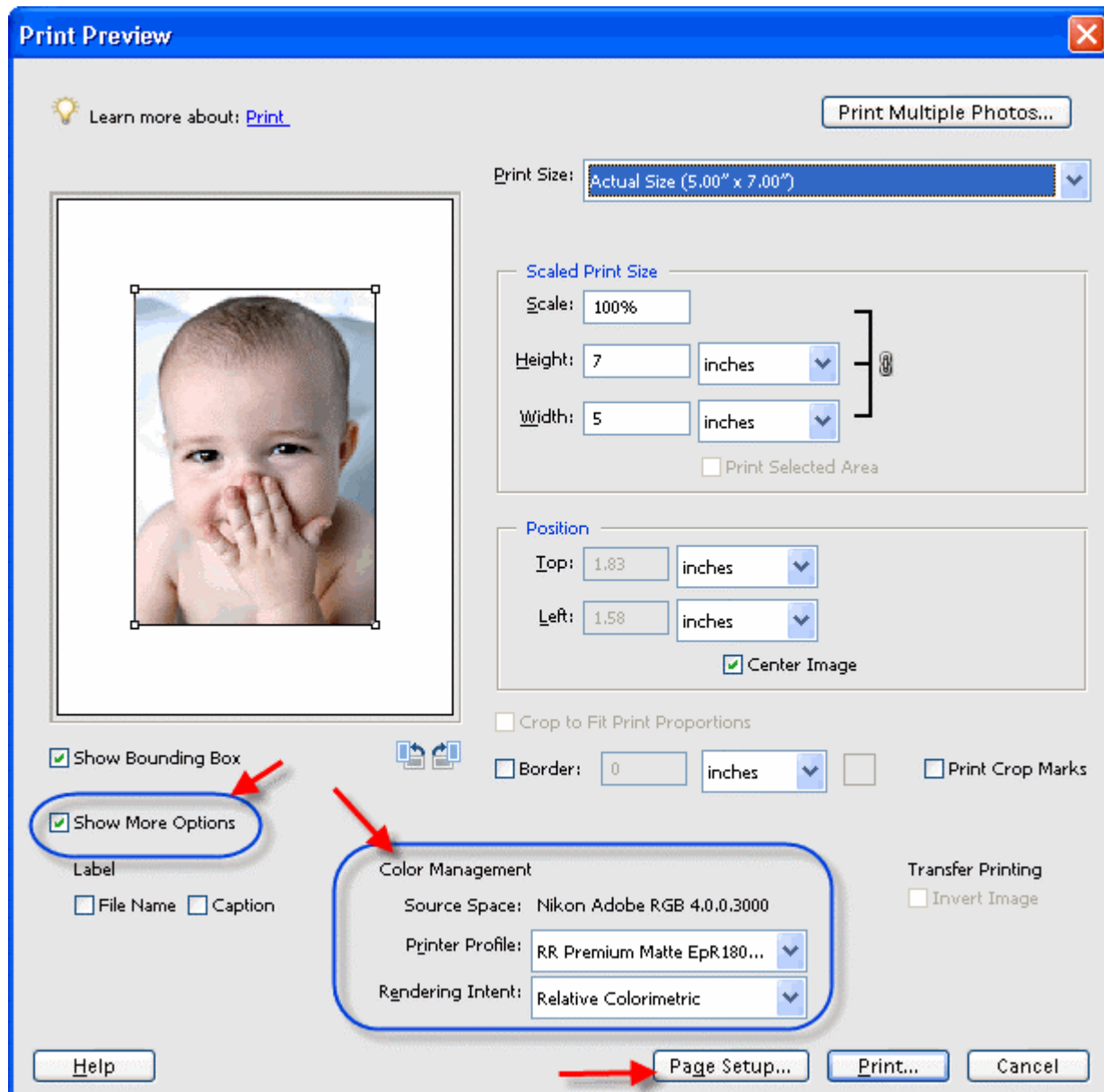
Win 98/ME  
Win NT/2000  
WinXP

### ICC File Location

Windows/System/Color  
Windows/System32/Spool/Drivers/Color  
Windows/System32/Spool/Drivers/Color

## Using Red River Paper profiles with your Epson printer

From Photoshop ELEMENTS choose File > Print or hit Ctrl + P on your keyboard and this dialog appears.

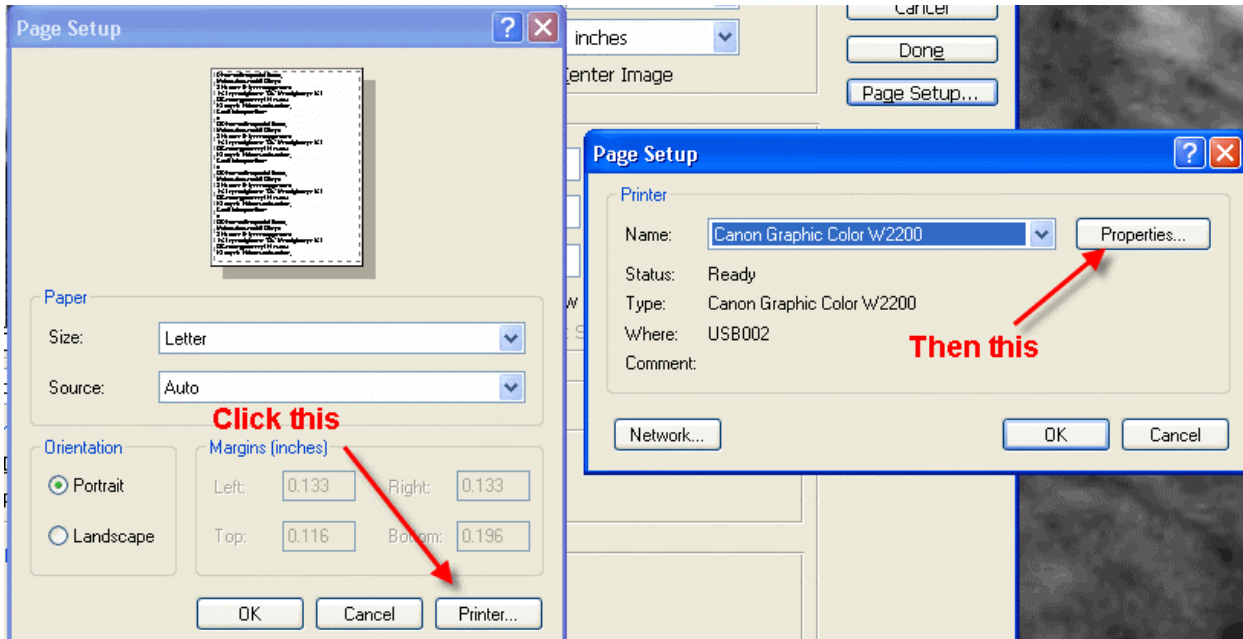


- 1) Check the "Show More Options" box
- 2) Choose your printer profile - Red River profiles all start with "RR". Rendering intent can be Relative Colorimetric or Perceptual (experiment with these).
- 3) Click **Page Setup...** to proceed.

Note: You can just click the Print button, but as you will see below, there are advantages to using Page Setup.

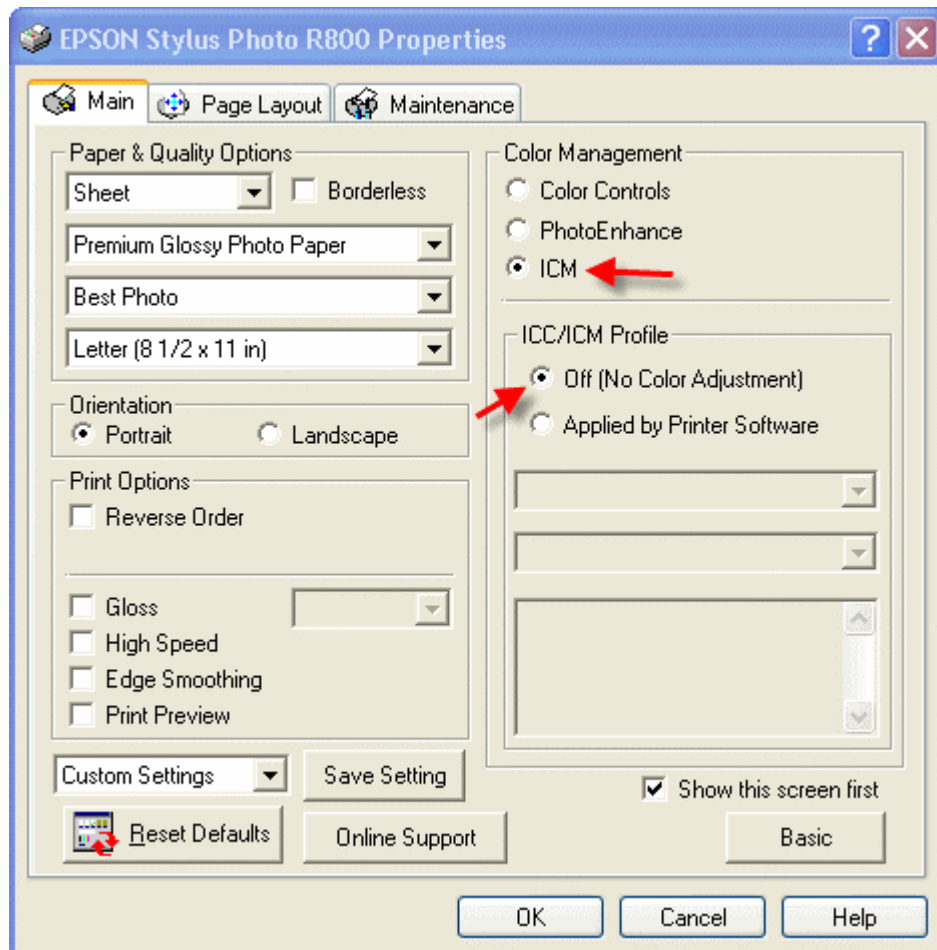
## Using Red River Paper profiles with your Epson printer

When the Page Setup menu comes up click the Printer button....Then click on the properties button after you verify the right printer is chosen from the list of installed printers on your computer

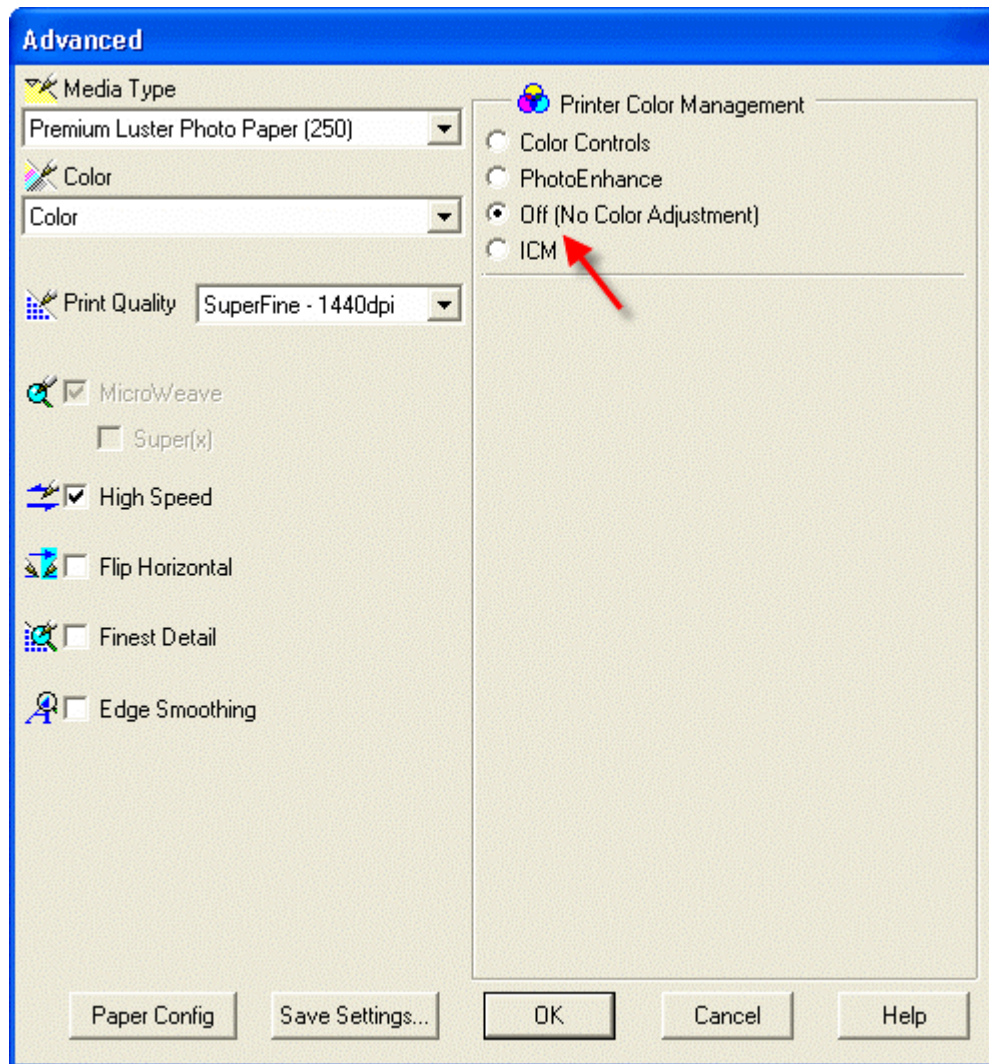


## Epson Printer Properties

Depending on your printer, you will see one of these two dialogs. Here we are instructing Epson to shut down its color management features so Photoshop can take over.



## Using Red River Paper profiles with your Epson printer



Now click OK until you are back at Photoshop's print with preview. We do this extra work to insure that Photoshop has not modified your color management choices (which it has a nasty habit of doing randomly).

The settings described above should be followed closely or you will have less than satisfactory results.

That completes the Epson / PC / Photoshop Elements color profile usage guide.