

Profile Usage Instructions

64lb. Premium Gloss DUO Epson R2400 PK Ink

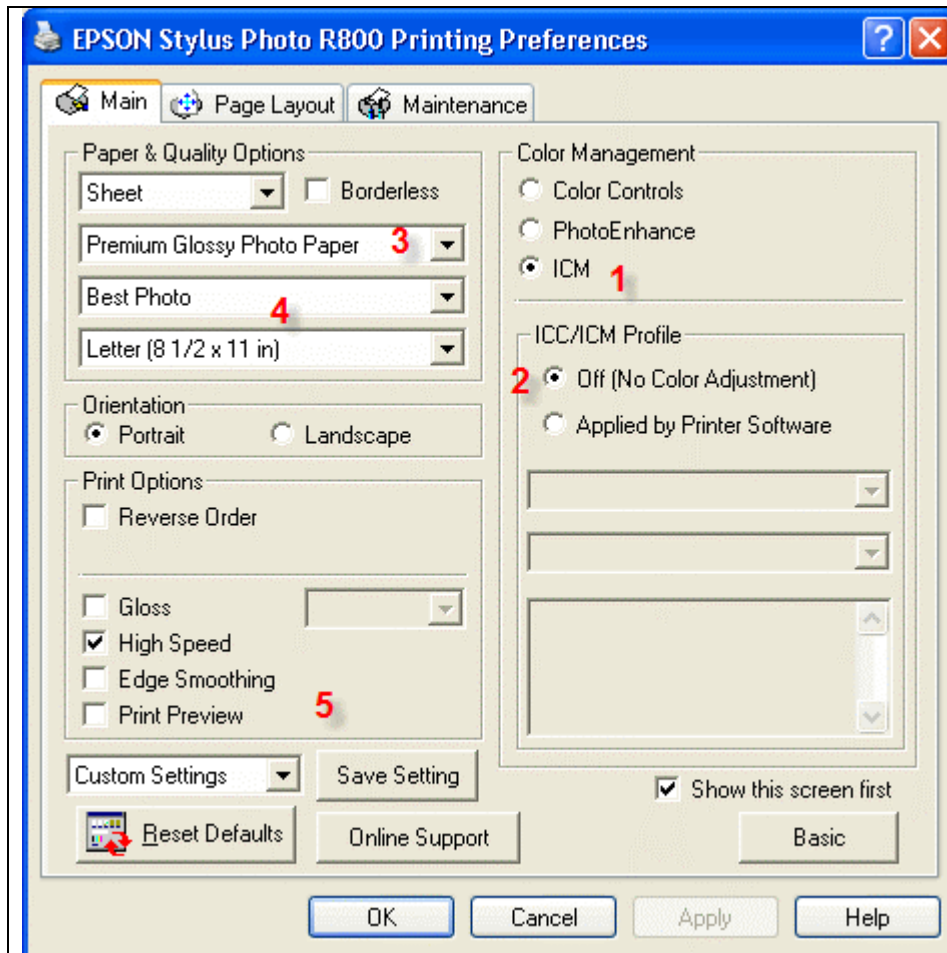
When you install the profile, it will show up in your print software profile menu as:

RR Premium Gloss DUO EpR2400.icc

Photoshop Rendering Intent – Set to Relative Colorimetric

Below are the required printer driver settings for this profile.

Parameter	Required Setting
Paper Setting	Premium Glossy Photo Paper
Quality	Best Photo
Color Management	Click ICM then Off (No Color Adjustment)
High Speed	ON
Edge Smoothing	OFF



Epson PC driver screenshot showing the settings for this profile.

- 1 – Set ICM
- 2 – Color Adj to OFF
- 3 – Select suggested media type
- 4 – Quality to Best Photo or 1440dpi
- 5 – High speed and edge smoothing are optional

For information on how to use color profiles, read Red River's "Color Profile Usage" and Epson's "How to use ICC profiles". These are available for download at www.redriverpaper.com/profiles