



## Color Profile Usage with Canon Printers

Updated 4/07

Color profiles are pieces of software that contain the color space, or dynamic range of a particular printer, ink, and paper combination. Printer color profiles are crucial to a color managed workflow that results in accurate and consistent color reproduction. Color profile use requires an "ICC aware" application like Photoshop, Qimage, Photoshop Elements, Corel Paint, and others.

NOTE! Due to the relatively technical nature of color management, Red River Paper cannot offer support for these profiles beyond the documents on our website and that come with the profile zip downloads.

### Download the Profile

Click on the link for your printer and Red River inkjet paper. You will be prompted to download a file. We recommend having it go to your desktop or other readily available location on the hard drive.

### Open the ZIP file

We use a program to create universal ZIP files. They work with the native unzip software provided by Microsoft and Apple.

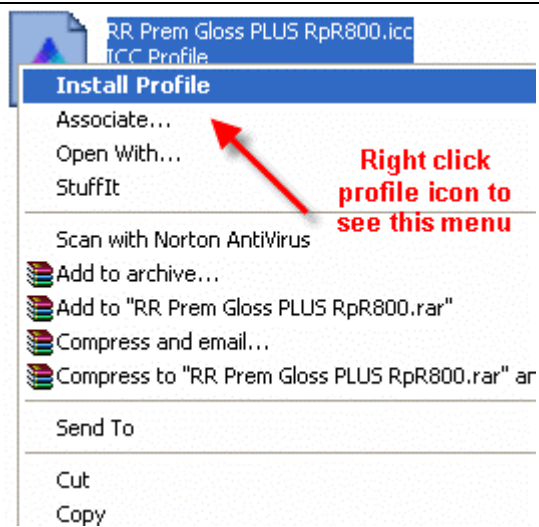
### Install the Profile

The ICC files must be placed in the proper folder for your editing application to see and use them.

**PC** - After the profile is unzipped, simply **RIGHT CLICK** on the file and choose install from the menu. You can also drag and drop into the profiles folder. See the chart below.



PC Profile Icon



PC profile installation procedure

### OS

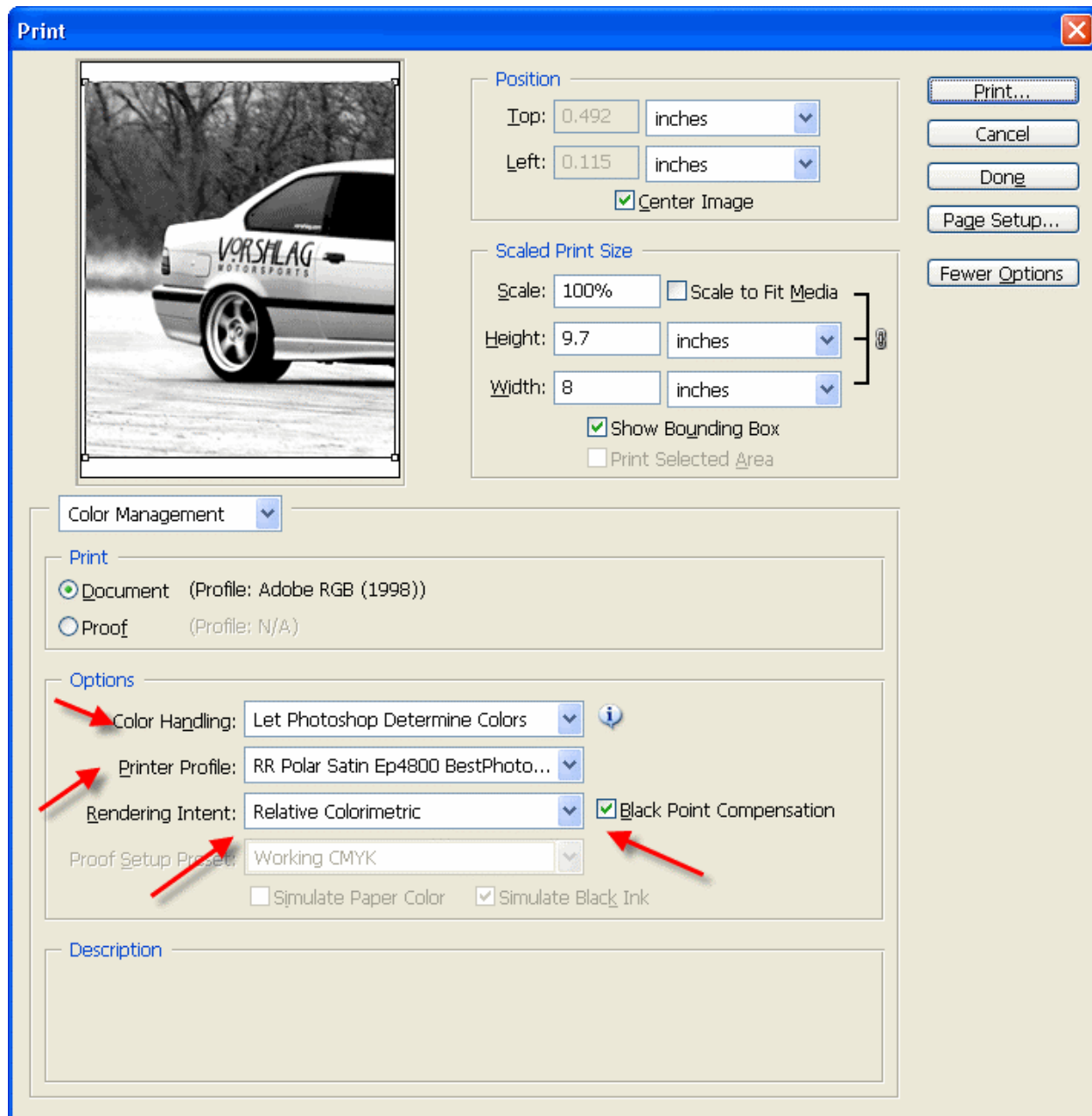
Win 98/ME  
Win NT/2000  
WinXP

### ICC File Location

Windows/System/Color  
Windows/System32/Spool/Drivers/Color  
Windows/System32/Spool/Drivers/Color

## Using Red River Paper profiles with your Canon printer

Examples use Photoshop CS2. Refer to your software manual or our color profile knowledgebase for information on other products.

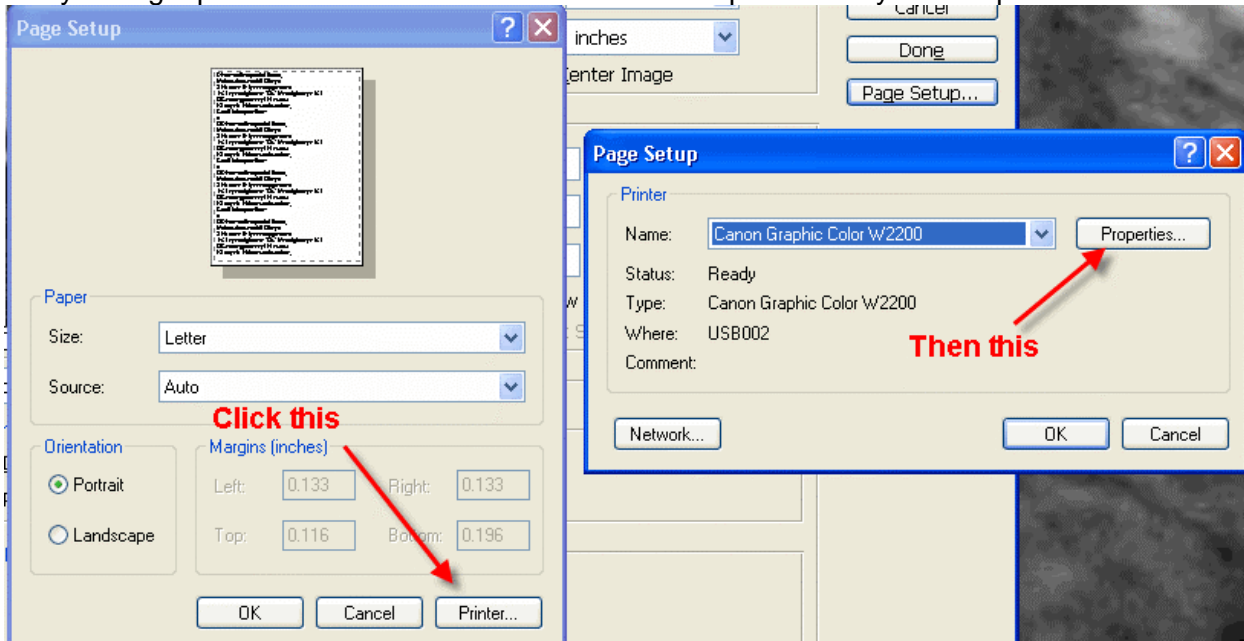


- 1) Let Photoshop determine colors
- 2) Choose your printer profile - Red River profiles all start with "RR"
- 3) Rendering intent can be Relative Colorimetric or Perceptual (experiment with these)
- 4) Check "Black Point Compensation"

When you are satisfied with the page layout and color management settings, click **Page Setup...** to proceed.

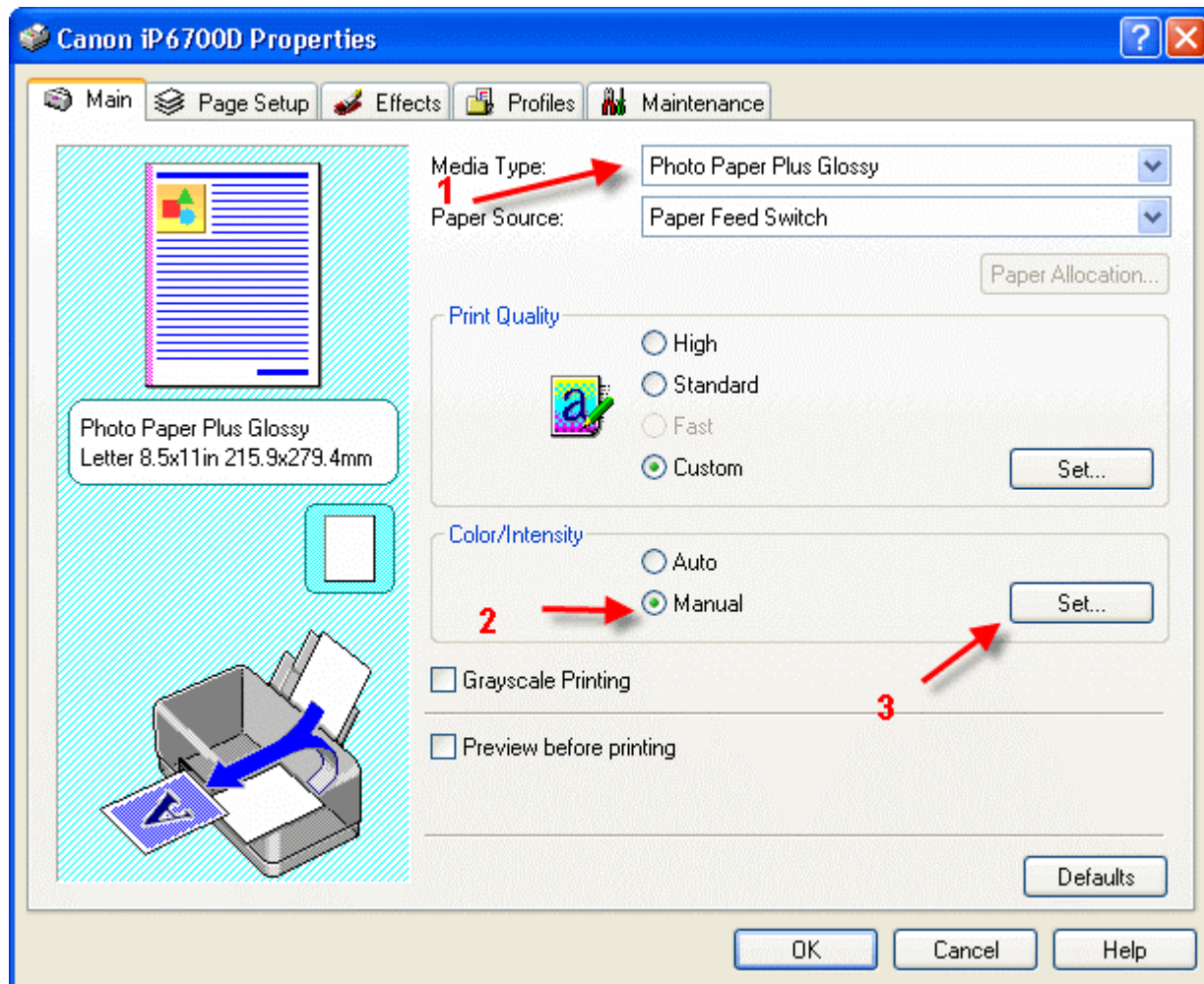
Note: You can just click the Print button, but as you will see below, there are advantages to using Page Setup.

When the Page Setup menu comes up click the Printer button....Then click on the properties button after you verify the right printer is chosen from the list of installed printers on your computer

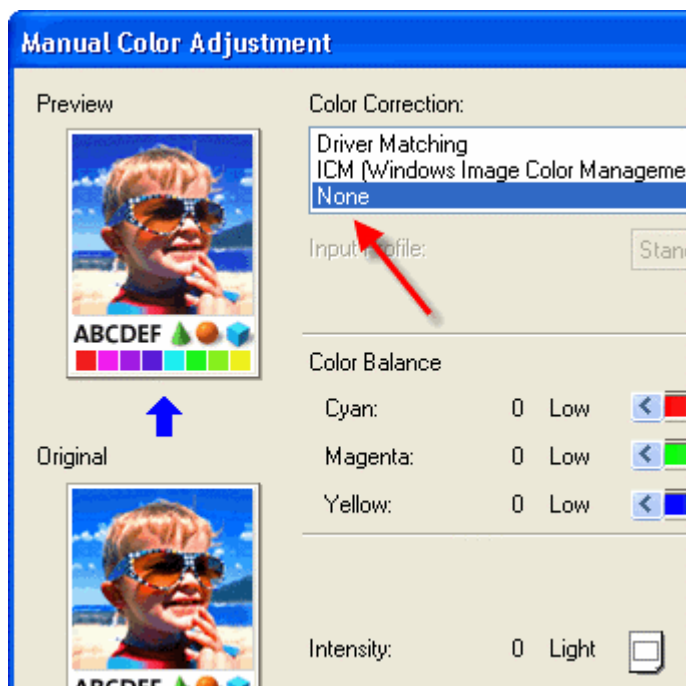


### Canon Printer Properties

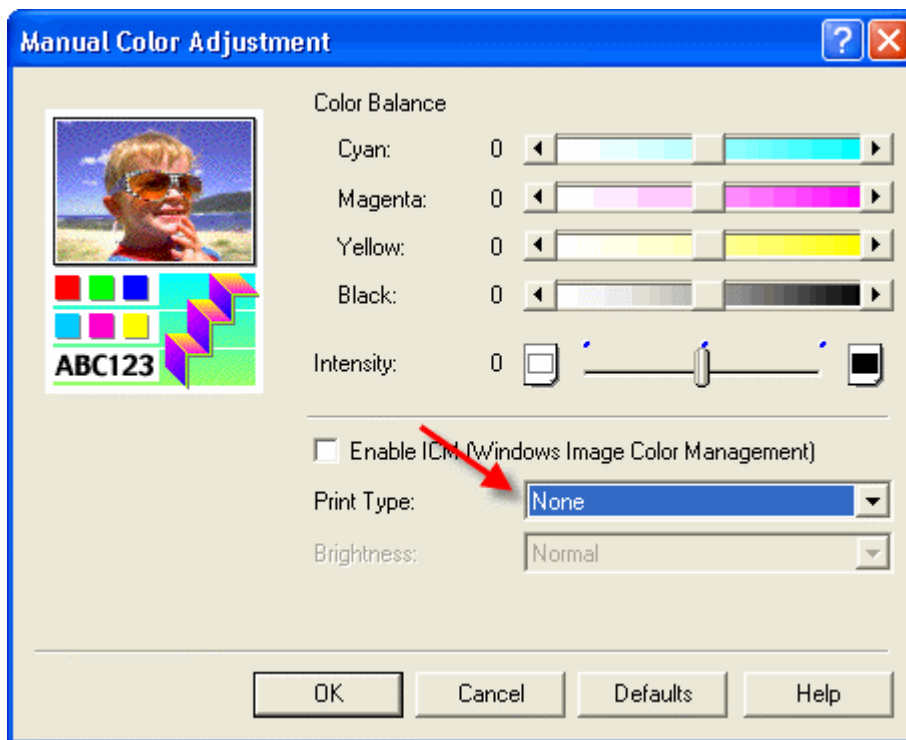
The menus may look slightly different from model to model but the concept is the same. Choose the right media setting (from the instructions PDF in our profile zip file), the go to Manual Color Adjustment



Set color correction to None if your dialog looks like this....then click OK



If you see this menu, set Print Type to None....then click OK



Now click OK until you are back at Photoshop's print with preview. We do this extra work to insure that Photoshop has not modified your color management choices (which it has a nasty habit of doing randomly).

The settings described above should be followed closely or you will have less than satisfactory results.

That completes the Canon / PC / Photoshop color profile usage guide.