

Red River Paper Color Profile Usage Photoshop CS3 / CS4 / CS5

Instructions for Epson, Canon, and HP inkjet printers

Color profiles are pieces of software that bypass your printer color management in an attempt to reproduce better color gamut and print quality for a specific paper, printer and ink set. If you are unfamiliar with profiles or Photoshop, read all support documents carefully before beginning.

NOTE! Due to the technical nature of color management, Red River Paper cannot offer technical support for these profiles beyond the documents and links included with each profile.

To begin:

Install the Red River profiles on your computer. The ICC files must be placed in the proper folder for Photoshop to see and use them. Mac users will have to manually place the file in one of the folders below.

Apple OS 10.4 and up

This is the standard location for profiles

ICC File Folder Location

Library > Colorsync > Profiles

If you do not see the profile available in Photoshop or other software try this location.

Library > Colorsync > Profiles > Profiles

If you encounter problems in color management or odd software behavior try putting profiles in this alternative location.

User > Library > Colorsync > Profiles

Apple OS 9

ICC File Folder Location

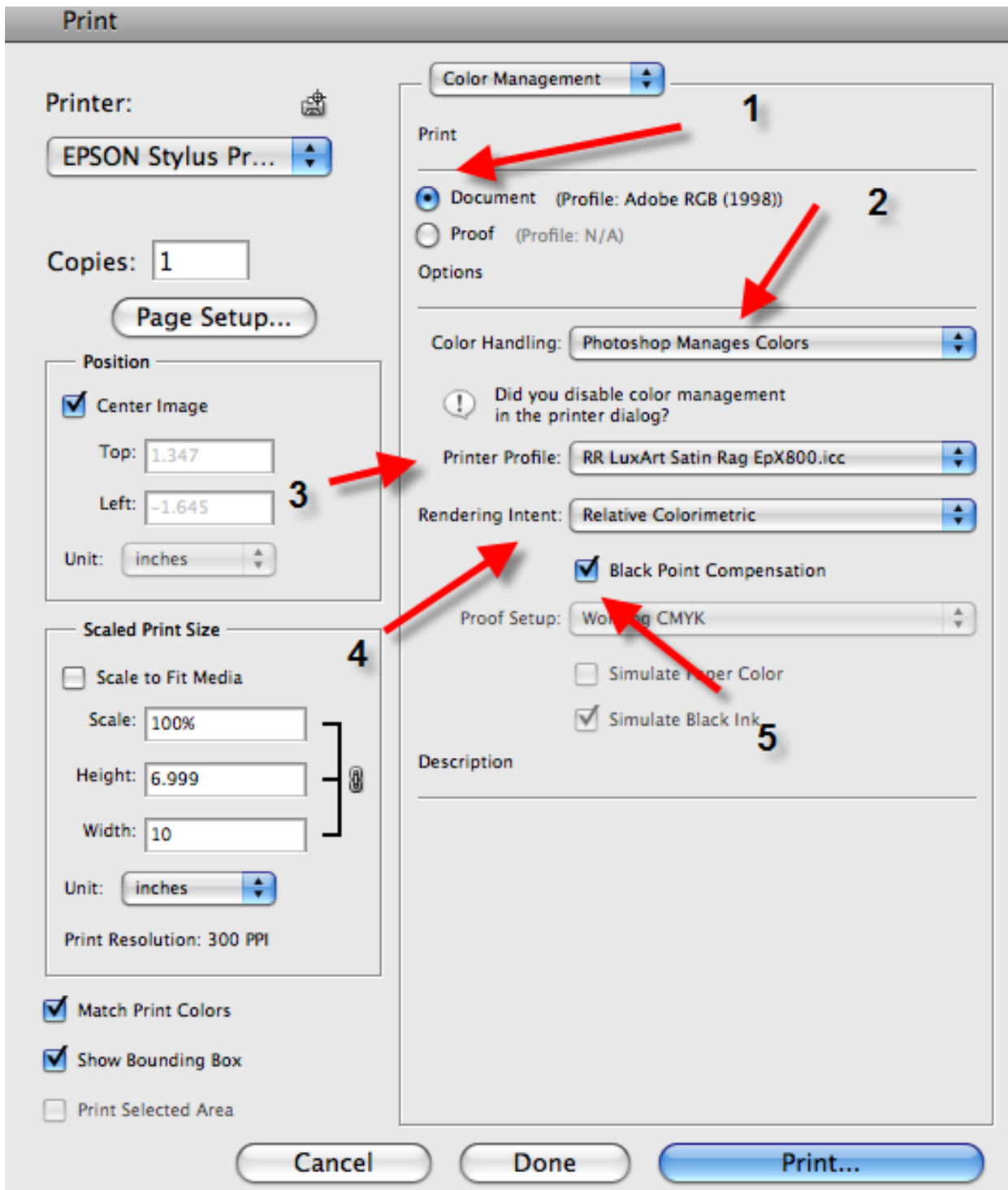
System Folder > Colorsync > Profiles

A video on profile installation is at <http://www.redriverpaper.com/installprofiles>

GET STARTED

When you are ready to print, choose File > Print (Command +P) and the Print dialog will appear.

- 1) Verify your document is Adobe RGB, sRGB, or ProPhoto RGB
- 2) Set Color Handling to Photoshop Manages Colors
- 3) Choose your paper's profile from the Printer Profile drop down
- 4) Select rendering intent – Relative Colorimetric or Perceptual.
- 5) Check Black Point Compensation



Now click Print

EPSON PRINTERS

Print

Printer: EPSON Stylus Pro 4880

Presets: Standard

Copies: 1 Collated

Pages: All
 From: 1 to: 1

Printer Settings

Basic Advanced Color Settings

Page Setup: Sheet - Maximum

Paper Tray

Media Type: Premium Luster Photo Paper (260)

Print Mode: AccuPhoto HD 16 Bit Output

Color Mode: Off (No Color Management)

Output Resolution: SuperPhoto - 1440 dpi

Super MicroWeave
 High Speed
 Flip Horizontal
 Finest Detail

Print quality near the bottom edge may decline or the area may be smeared depending on the media. For details about this setting, see online help or your Reference Guide.

? PDF Preview Supplies... Cancel Print

Set the media type based on your profile's instructions.

Color Mode should be set to Off (No Color Management)

Verify your other quality settings and click Print

CANON PRINTERS

Print

Printer: Canon Pro9000II series

Presets: Standard

Copies: 1 Collated

Pages: All
 From: 1 to: 1

Quality & Media


Media Type : Photo Paper Plus Semi-gloss

Paper Source : Rear Tray

Print Quality : High
 Standard
 Fast
 Custom

Grayscale Printing

? PDF ▼ Preview Supplies... Cancel Print



Set the media type based on your profile's instructions.
Set Print Quality to your desired setting

In the Color Options menu the Color Mode should be grayed out.

Click Print

Print

Printer: Canon Pro9000II series

Presets: Standard

Copies: 1 Collated

Pages: All
 From: 1 to: 1

Color Options

Color Mode: Standard

Cyan: 0 Low High

Magenta: 0 Low High

Yellow: 0 Low High

Tone: 0 Cool Warm

Brightness: Normal

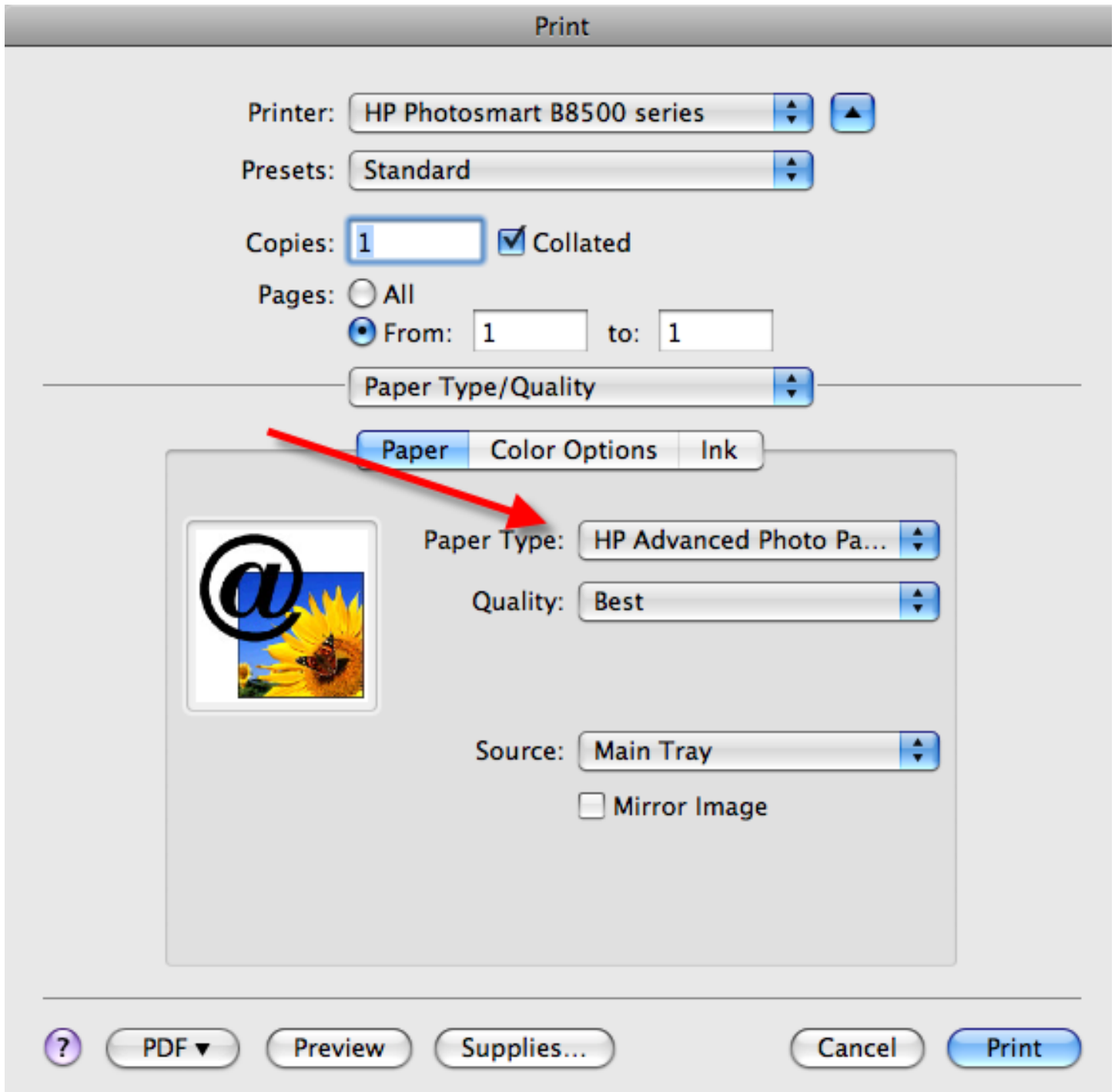
Intensity: 0 Light Dark

Contrast: 0 Low High

Sample Type: Standard View Color Pattern

PDF Preview Supplies... Cancel Print

HP PRINTERS



Set the Paper Type based on your profile's instructions.

Set quality to your desired setting

The Color Options should automatically set to Application Managed Colors

Click Print